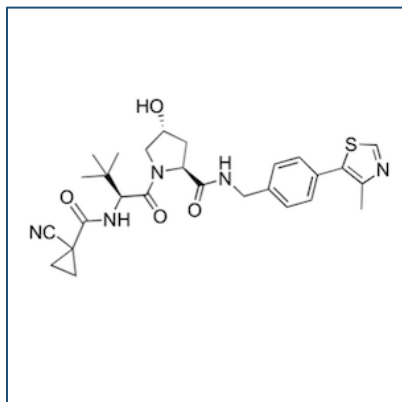


Chemical Probe Reagent Authentication Certificate



[The Chemical Probes Portal](#) endorses **VH298** for use as a chemical probe in cells.

VH298



Protein target name: VHL

Target class: Post-translational modification/E3 ubiquitin ligase

SMILES string:

```
O[C@@H]1C[C@@H](C(NCC2=CC=C(C3=C(C)N=CS3)C=C2)=O)N(C([C@@H])(NC(C4(C#N)CC4)=O)C(C)(C)C)=O)C1.O[C@@H]5C[C@@H](C(NCC6=CC=C(C7=C(C)N=CS7)C=C6)=O)N(C([C@@H])(NC(C8(C#N)CC8)=O)C(C)(C)C)=O)C5
```

InChi Key: GYJMGEJLYDLYLJ-IUVJQGSXSA-N

Control compound: cisVH298

Recommendations for use

Recommended Concentration for use in cells: 10-100 μ M

This probe is not recommended for use in animal models.