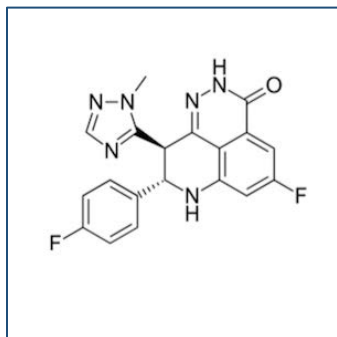


# Chemical Probe Reagent Authentication Certificate



[The Chemical Probes Portal](#) endorses **Talazoparib** for use as a chemical probe in cells.

## Talazoparib



**Protein target name:** PARPs

**Target class:** Other post-translational modification/PARP

**SMILES string:**

CN1C(=NC=N1)[C@@H]2[C@H](N=C3C=C(C=C4C3=C2NNC4=O)F)C5=CC=C(C=C5)F

**InChi Key:** IU EWAGVJRJORLA-HZPDHXFCSA-N

**Control compound:** N/A

## Recommendations for use

Recommended Concentration for use in cells: 10-100 nM

This probe is also endorsed for use in mice.