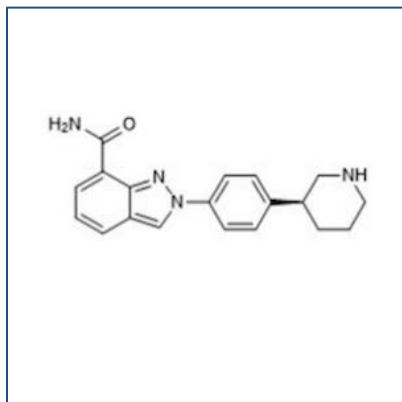


# Chemical Probe Reagent Authentication Certificate



[The Chemical Probes Portal](#) endorses **Niraparib** for use as a chemical probe in cells.

## Niraparib



**Protein target name:** PARP1, PARP2

**Target class:** Other post-translational modification/PARP

**SMILES string:** C1C[C@H](CNC1)C2=CC=C(C=C2)N3C=C4C=CC=C(C4=N3)C(=O)N

**InChi Key:** PCHKPVIQAHNQLW-CQSZACIVSA-N

**Control compound:** N/A

## Recommendations for use

Recommended Concentration for use in cells: Up to 50 nM

This probe is also endorsed for use in mice.