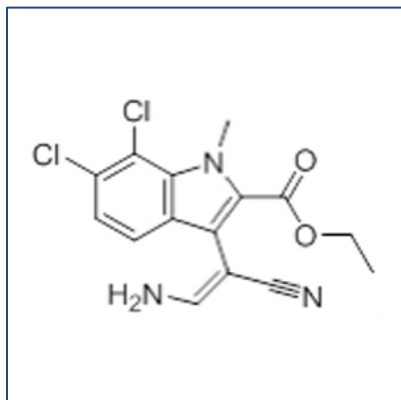


Chemical Probe Reagent Authentication Certificate



[The Chemical Probes Portal](#) endorses **KH-CB19** for use as a chemical probe in cells.

KH-CB19



Protein target name: CLK1, CLK4, DYRK1A

Target class: Protein kinase/CMGC

SMILES string: CCOC(=O)C1=C(C2=C(N1C)C(=C(C=C2)Cl)Cl)/C(=C\N)/C#N

InChi Key: CXJCGSPAPOTTSF-VURMDHGXSA-N

Control compound: N/A

Recommendations for use

Recommended Concentration for use in cells: 50 nM - 1000 nM

This probe is not recommended for use in animal models.