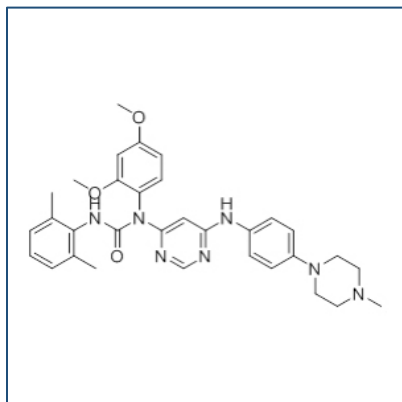


# Chemical Probe Reagent Authentication Certificate



[The Chemical Probes Portal](#) endorses **HG-9-91-01** for use as a chemical probe in cells.

HG-9-91-01



**Protein target name:** SIK1, SIK2, SIK3

**Target class:** Protein kinase/CAMK

**SMILES string:**

CC1=C(C(=CC=C1)C)NC(=O)N(C2=C(C=C(C=C2)OC)OC)C3=NC=NC(=C3)NC4=CC=C(C=C4)N5CCN(CC5)C

**InChi Key:** UYUHRKLITDJEHB-UHFFFAOYSA-N

**Control compound:** N/A

## Recommendations for use

Recommended Concentration for use in cells: 100-500 nM

This probe is not recommended for use in animal models.