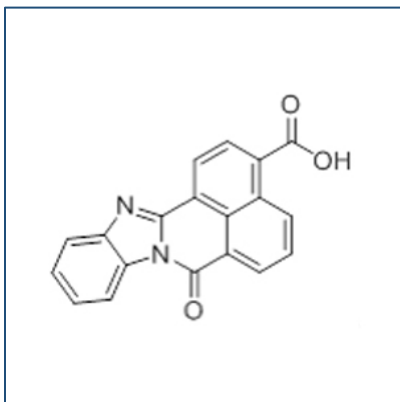


Chemical Probe Reagent Authentication Certificate



[The Chemical Probes Portal](#) endorses **STO609** for use as a chemical probe in cells.

STO609



Protein target name: CAMKK1, CAMKK2

Target class: Protein kinase/Other

SMILES string: C1=CC=C2C(=C1)N=C3N2C(=O)C4=CC=CC5=C(C=CC3=C54)C(=O)O

InChi Key: MYKOWOGZBMOVBJ-UHFFFAOYSA-N

Control compound: N/A

Recommendations for use

Recommended Concentration for use in cells: Up to 300 nM

This probe is not recommended for use in animal models.