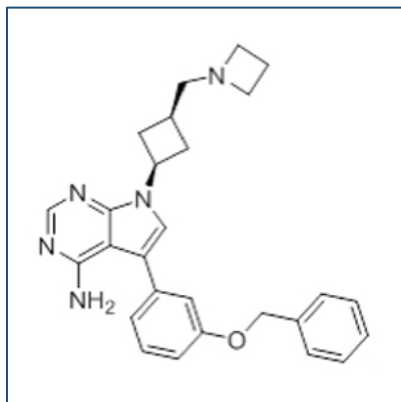


## Chemical Probe Reagent Authentication Certificate



[The Chemical Probes Portal](#) endorses **NVP-AEW541** for use as a chemical probe in cells.

### NVP-AEW541



**Protein target name:** IGF1R

**Target class:** Protein kinase/Tyrosine Kinase

**SMILES string:** C1CN(C1)CC2CC(C2)N3C=C(C4=C3N=CN=C4N)C5=CC(=CC=C5)OCC6=CC=CC=C6

**InChi Key:** AECDBHGVIIIRMOI-UHFFFAOYSA-N

**Control compound:** N/A

### Recommendations for use

Recommended Concentration for use in cells: Up to 200 nM

This probe is also endorsed for use in mice.