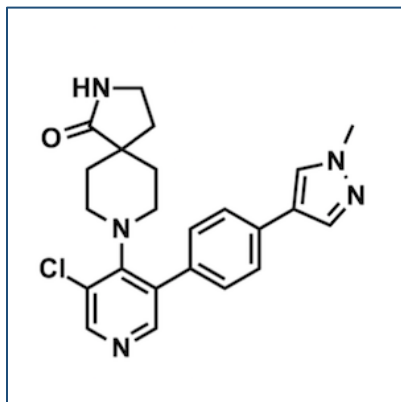


Chemical Probe Reagent Authentication Certificate



[The Chemical Probes Portal](#) endorses **CCT251545** for use as a chemical probe in cells.

CCT251545



Protein target name: CDK8, CDK19

Target class: Protein kinase/CMGC

SMILES string: CN1C=C(C=N1)C2=CC=C(C=C2)C3=CN=CC(=C3N4CCC5(CCNC5=O)CC4)Cl

InChi Key: LBFYQISQYCGDDW-UHFFFAOYSA-N

Control compound: Compound 7 and 9 (Nat. Chem. Biol. 2015, 11, 973-980)

Recommendations for use

Recommended Concentration for use in cells: 35-350 nM

This probe is also recommended for use in mice.