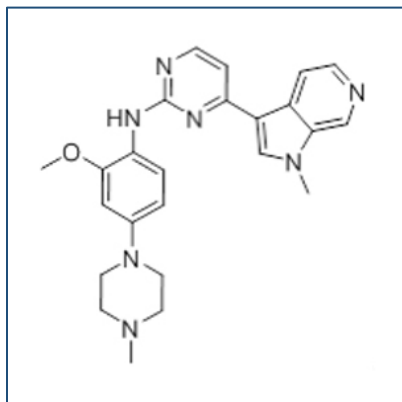


# Chemical Probe Reagent Authentication Certificate



[The Chemical Probes Portal](#) endorses **AZ191** for use as a chemical probe in cells.

## AZ191



**Protein target name:** DYRK1B

**Target class:** Protein kinase/CMGC

**SMILES string:** CN1CCN(CC1)C2=CC(=C(C=C2)NC3=NC=CC(=N3)C4=CN(C5=C4C=CN=C5)C)OC

**InChi Key:** ZYVXTMKTGDARKR-UHFFFAOYSA-N

**Control compound:** N/A

## Recommendations for use

Recommended Concentration for use in cells: 20 nM - 3  $\mu$ M

This probe is not recommended for use in animal models.