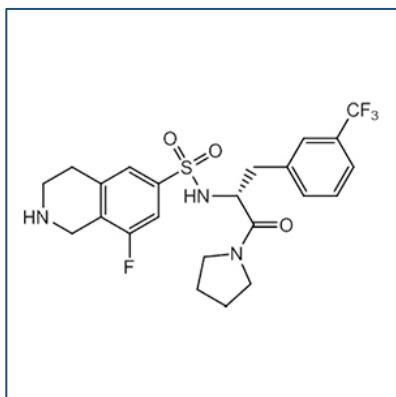


# Chemical Probe Reagent Authentication Certificate



[The Chemical Probes Portal](#) endorses **(R)-PFI-2** for use as a chemical probe in cells.

## (R)-PFI-2



**Protein target name:** SETD7

**Target class:** Epigenetics/Protein methyltransferase

**SMILES string:** C1CCN(C1)C(=O)[C@@H](CC2=CC(=CC=C2)C(F)(F)F)NS(=O)(=O)C3=CC(=C4CNCCC4=C3)F

**InChi Key:** JCKGSPAAPQRPBW-OAQYLSRUSA-N

**Control compound:** (S)-PFI-2

## Recommendations for use

Recommended Concentration for use in cells: 100 nM - 5  $\mu$ M

This probe is not rated for use in animal models.